

GENERAL INFORMATION

Product: Pulsarlube MSP 125cc/PL1
 Industry: FA (Factory Automation) Machinery manufacturing
 Customer: YUDO Robotics, Korea
 Application: Gantry Loader(Robot)Systems
 Installation: October7, 2011

BACKGROUND

Industrial robots are programmable manipulators that contain rotary and/or prismatic joints in order to perform precise, repetitive movements. They are designed to move parts, tools, materials, and devices through variable, programmed motions.

A Cartesian robot, also known as a Cartesian coordinate robot, is a common type of industrial robot. It has three prismatic joints(arms)whose axes are coincident with a Cartesian (X, Y, and Z) coordinate system. These arms can vary tremendously in size, depending on the purpose of the robot. In some particularly large designs, the horizontal arm will have support on both ends. This is called a Gantry Robot. It is used for pick-and-place operations, assembly, handling machine tools, and arc welding. A common application for the Gantry Robot is a computer numerical control (CNC) machine, and it can have a multitude of uses, especially as either a milling or drawing machine.



Gantry Robot (Loader) manufactured by YUDO Robotics

SPECIFIC REQUIREMENTS

This customer specifically wants an automatic grease lubricator which must be operating in synchronization with the equipment on which it is installed. Over-lubrication is strictly prohibited at any time and the damage or loss due to over-lubrication is not acceptable.

Among Pulsarlube M products, the Pulsarlube MSP unit perfectly suits above requirements and was finally approved. The Pulsarlube MSP unit operates either infrequently or intermittently by synchronizing itself to the equipment, which avoids the problem of over-lubrication. If the equipment is not ON, then the Pulsarlube MSP unit goes into "Stand-By Mode" and does not dispense lubricant until the machine goes back into operation. It can prevent any waste of lubricant as well as damage or loss resulting from over-lubrication.

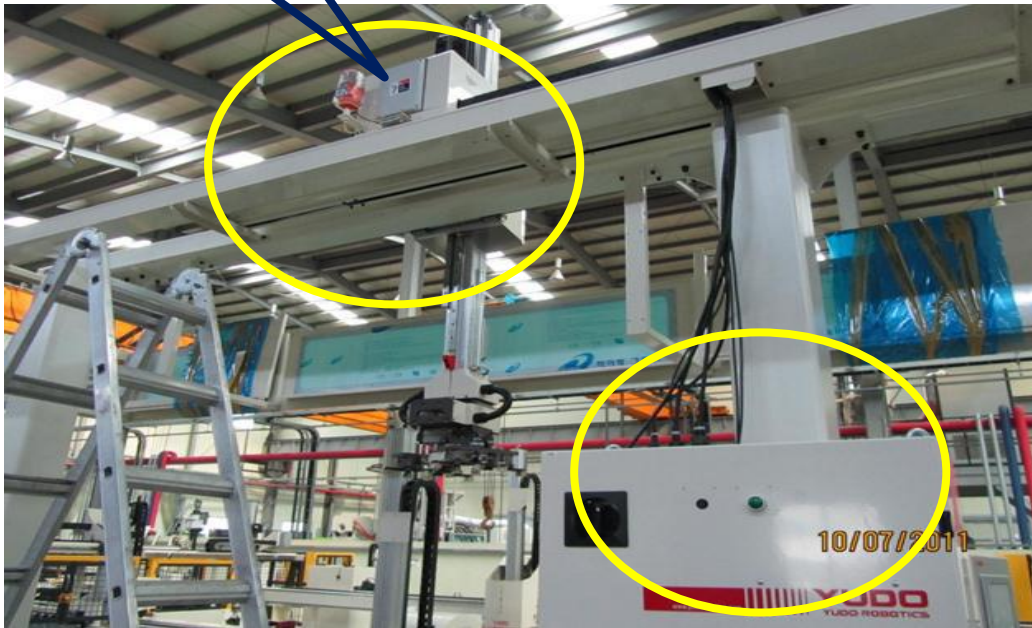
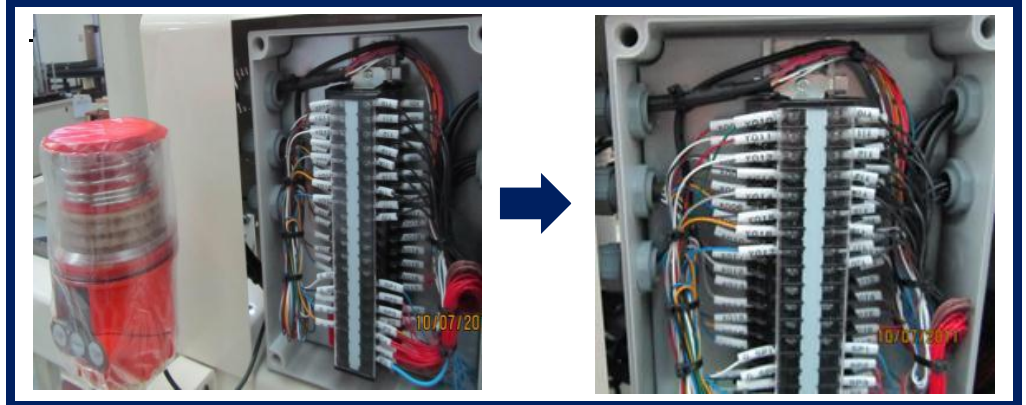
For further question or specific information, please contact your local distributor or manufacturer.

INSTALLATION INFORMATION

1st Step

Electrically connect the Pulsarlube MSP unit and (+) (-) of upper control unit

Upper Control unit of the Gantry Robot (DC24 Volt)



Main Control Unit



2nd Step

Electrically connect all moving parts controlled by upper control unit and main control unit

Pulsarlube MSP units installed on Gantry Robots (Loaders)



NOTE1 When the AC (Alternating Current) is used, follow above instruction except the wiring diagram.

NOTE2 In case of oil lubricator (Pulsarlube OL500), installation instruction is exactly same as above.