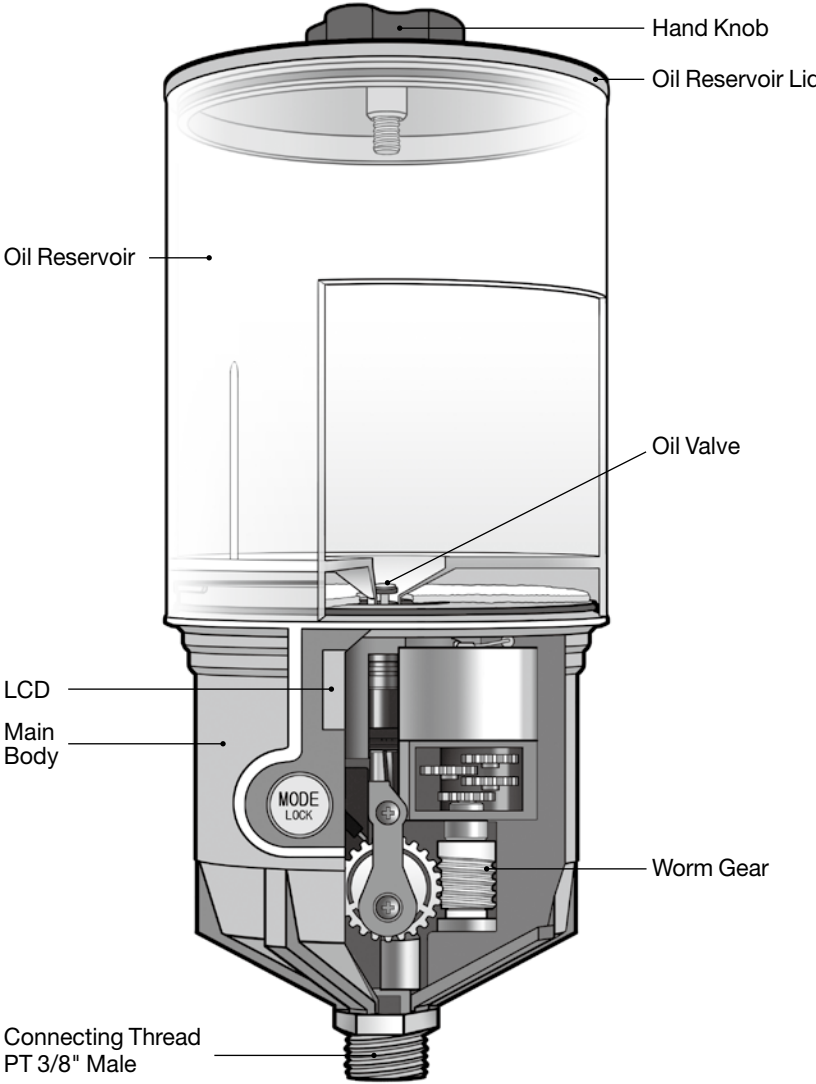
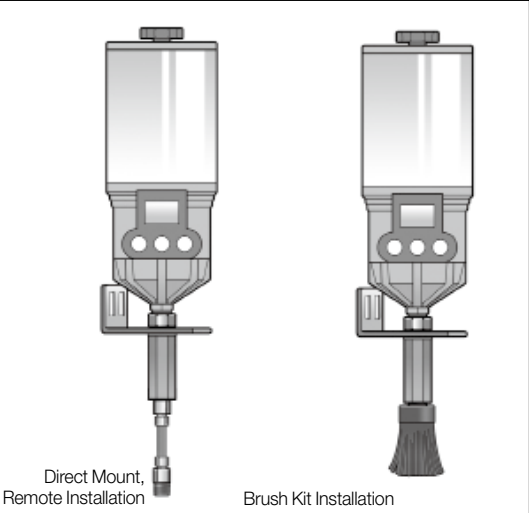


Product Details



Installation Guidelines

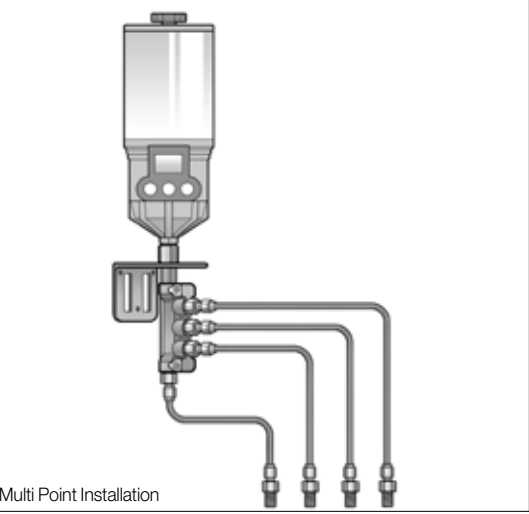


A. Single Point Installation  
using Brush Kit

Install appropriate accessories  
and brush kits.

Note

For a complete list of available  
accessories, refer to the list on  
the back labeled Accessories  
for Oil Lubrication.



B. Multi Point Installation using  
Multi Point Installation Kit

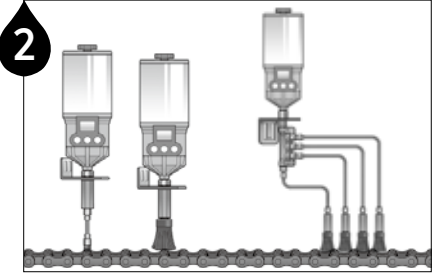
Available up to 4 points using oil  
distributor. (Select the appropriate  
1250RO multi-point kit)

Note

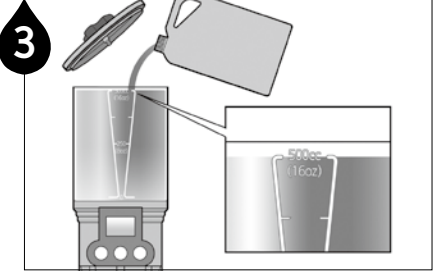
Mount the Pulsarube OL500 unit  
in close proximity to the application  
to keep feed lines as short as  
possible.



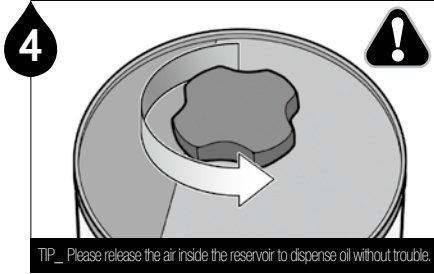
Remove the oil reservoir and check that the  
battery is properly installed.



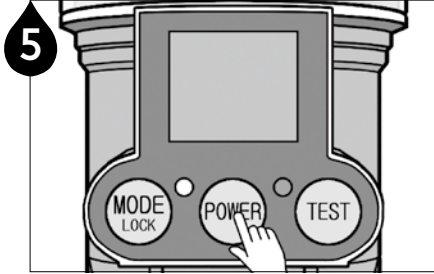
Install the appropriate accessories for the  
selected installation method. Refer to the user  
manual included with your single/multi point  
installation kit or brush and bracket kit.



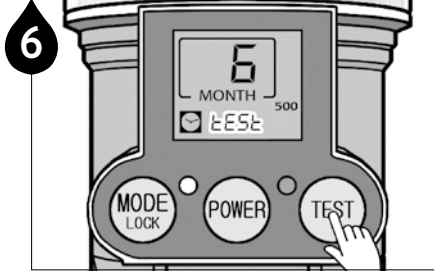
Remove the oil reservoir lid and fill the  
reservoir with oil to the 500ml level.



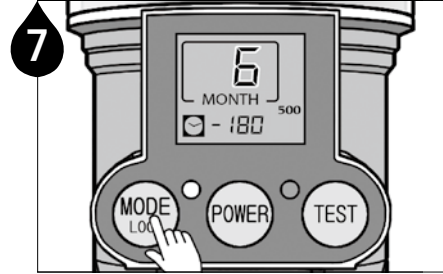
Turn the hand knob counter clockwise 1~2  
turns before closing the lid to open the vent  
and relieve vacuum pressure.



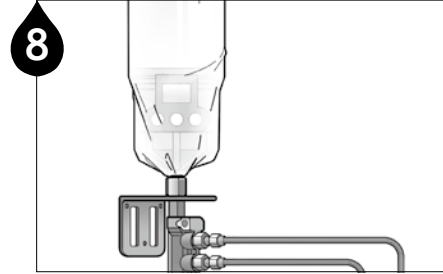
Press the POWER button for 2 seconds to  
turn on the unit.



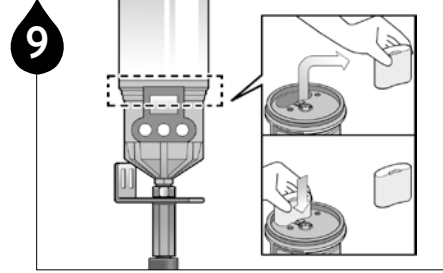
Press the TEST button for 2 seconds to run  
a test cycle and check for proper operation  
of the unit. Oil will dispense during the test  
cycle.



Press the MODE button to program the  
dispensing period.

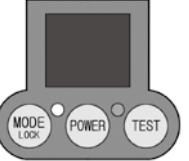


Use the included transparent dust cover to  
protect the unit from contamination.

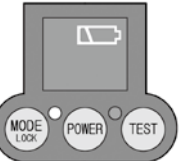


The Pulsarube OL500 is a reusable unit but  
the battery pack must be replaced when  
each dispensing period set is complete. After  
installing a new battery, reset the unit and repeat  
the previous steps.

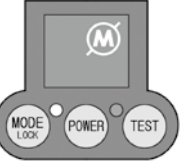
Troubleshooting Guidelines



**Symptom :** Blank LCD screen  
**Possible Cause :** Electrical malfunction of CPU  
or circuitry, battery problem  
**Solution :** Replace battery pack or press reset  
button to restart the lubricator. If the problem  
persists, contact your supplier.



**Symptom :** Low Battery Indication  
**Possible Cause :** Rapid power consumption due  
to improper storage or harsh operating conditions  
(temperature, humidity, or high backpressure).  
**Solution :** Store the battery pack in cool, dry  
place and choose proper battery type for  
application. Optional lithium battery pack is  
available for more advanced applications.



**Symptom :** Excessive Backpressure Indication  
**Possible Cause :** Excessive backpressure due  
to over-oil lubrication, ruptured lube line, long  
distance remote installation, etc.  
**Solution :** A) Check backpressure at lube point  
and/or lube line, B) check oil dispensing rate,  
C) reduce remote installation distance.

## Button Operation

### MODE LOCK

#### Dispensing Period

Press to set dispensing period  
1, 2, 4, 6, 12, 18, 24 month & 15 days (H)

#### Automatic Lock Out Mode

Press for 2 seconds to unlock (H)

### POWER

#### Power ON/OFF

Press to Power unit On or Off

### TEST

#### TEST Mode

ON : Press for 2 seconds

OFF : Short press of button

(will stop after completion of ongoing cycle)

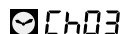
### RESET

Reset to default setting when the unit malfunctions and/or after changing the Service Pack

## LCD Display



Dispensing period setting



Number of days operation has been on hold due to excessive backpressure



Remaining dispensing days



Low battery power



Automatic Lock Out mode



Operation on hold due to excessive backpressure



Oil reservoir capacity



Empty oil level



TEST mode

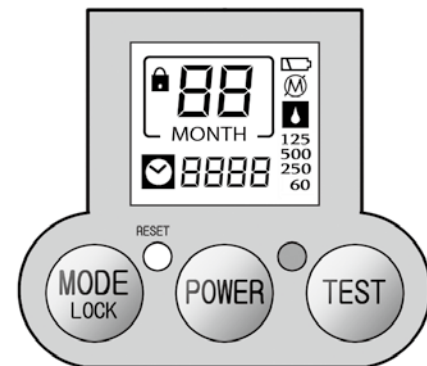


LED blinks when battery is low, excessive backpressure exists, or oil level is empty



Number of days since the cycle ended (H) and (M) will also display)

ISO9001/14001 CE



## Accessories for Oil Lubrication (Sold Separately)

Remote / Multi Point Installation Kits ( 1250RO1~4 Kits )



C003-1



C004-1



C006



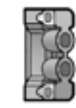
C007



A002



B051



C003-2



B057



C009



C011



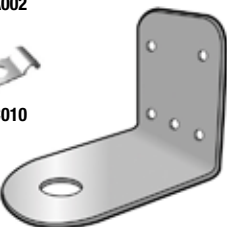
C010



C003-3



C021-2 ~ C021-4



B002  
(For lubricator only)

## Oil Brush & Bracket Assembly

Brush Kits (Kit No.C032~33, C044~47)



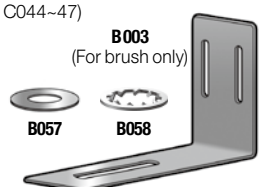
B051



A002



C012



B003  
(For brush only)



B057



B058

Nylon



C017

Stainless Steel



C018

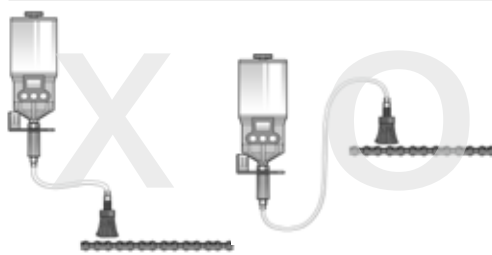


C014



C013

1. Use OEM Pulsarlube oil kits to ensure proper lubrication
2. To download installation manuals, please visit our website at [www.pulsarlube.com](http://www.pulsarlube.com).  
➡ Products Pulsarlube Installation Kits ➡ Oil Lubrication
3. Do not use Teflon tape on parts connected to oil distributor (Item no. C003-1~C003-3)



### Warning

For oils below ISO VG 100, place the oilers below the lube points and curl the lube lines a couple of times to avoid oil leaks caused by gravity.  
For oils below ISO VG 100 – OL500 products should be installed below the lube points.

**Shelf life and Product Warranty** Warranty is limited to original defects in material and workmanship and will not cover any collateral damage due to mishandling, abuse and /or any other inappropriate use of this product. Warranty period is 1year from the date of purchase.

Rev.01

# PULSARLUBE

The World Leader of Automatic Lubrication

### Pulsarlube USA, Inc.

1170 Ardmore Ave Itasca IL 60143, USA

TEL:1-847-593-5300 FAX:1-847-593-5303 [www.pulsarlube.com](http://www.pulsarlube.com) / [info@pulsarlube.com](mailto:info@pulsarlube.com)



# PULSARLUBE

### User Manual

# Pulsarlube OL500 (500ml)